

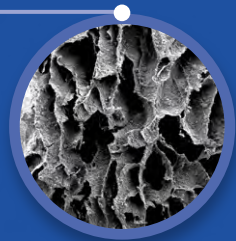
# QBONPLUG®

A Dual-Function Plug For Bone Grafting  
& Socket Preservation Without Application of Membrane

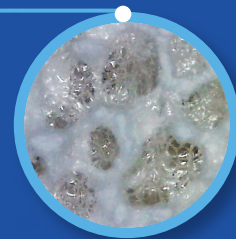
- Single Root & Molar Type Available -



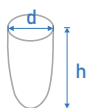
ECM-like hydrogel structure to promote attachment and differentiation of osteoblast



Synthetic bone graft offer a resorbing bioactive scaffold for bone formation



## Order Information



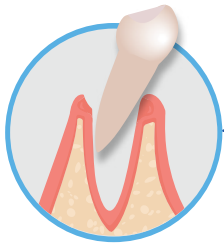
Product Code	Unit Volume (cc)	Plug Size (dxh)	Insurance code	
DPQBP	PM	1.44	10.5 x 23	L7402757
	PS	0.62	8 x 17	L7402756
	PX	0.34	6.5 x 14	L7402756

# QBONPLUG<sup>®</sup>

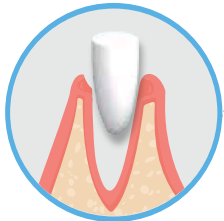
QBONPLUG is unique type dental bone plug with a highly porous hydrogel structure having a tooth-shaped matrix with BCP bone graft inserted in side providing not only hemostasis and pain relief but also fast bone formation and extracted socket preservation



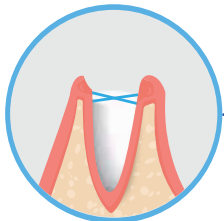
## Instruction For Use



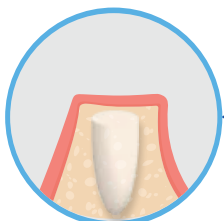
Extract tooth & debride tooth socket to remove infected tissue.



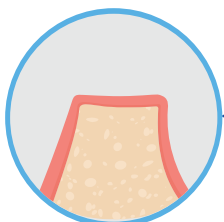
Insert appropriate size QBONPLUG to the extraction socket with finger pressure. Do not hydrate nor cut QBONPLUG into pieces to insert in the socket.



Suture the tissue on top of QBONPLUG with figure-8 suture to keep grafted plug in place. There is no need to use a membrane to cover.



While the QBONPLUG resorbs, hydrogel promotes attachment and differentiation of osteoblast. Synthetic bone offer a resorbing bioactive scaffold for bone formation. The implant fixture could be placed 2 months after QBONPLUG insertion.



The bone graft resorb over 2 ~ 3 months(patient specific) and will turn from radiolucent to radiopaque, which indicates sufficient bone formation.

### Manufacturer

B-dong 606, 10, Baekseok Gongdan 1-ro, Seobuk-gu, Cheonan-si, Chungcheongnam-do, Republic of Korea

TEL. +82-41-906-5666 FAX. +82-41-906-5667 E-mail. inobone@inobone.co.kr