





FRABONE[®]-I

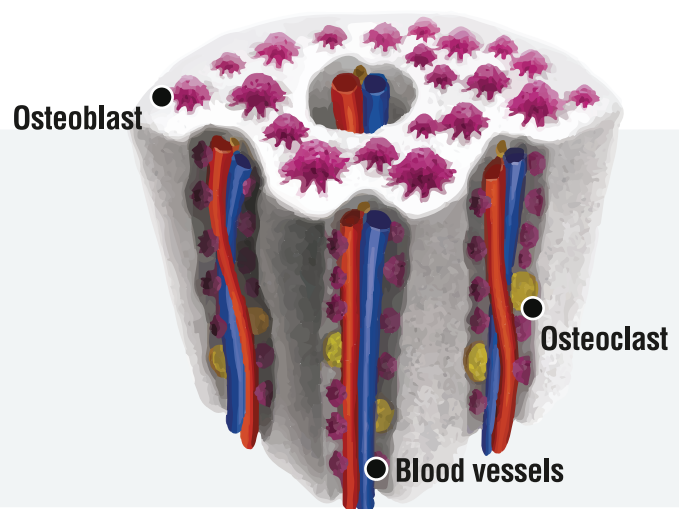
Human Cortical Bone (Harversian Canal) Mimic
Synthetic Bone Substitute

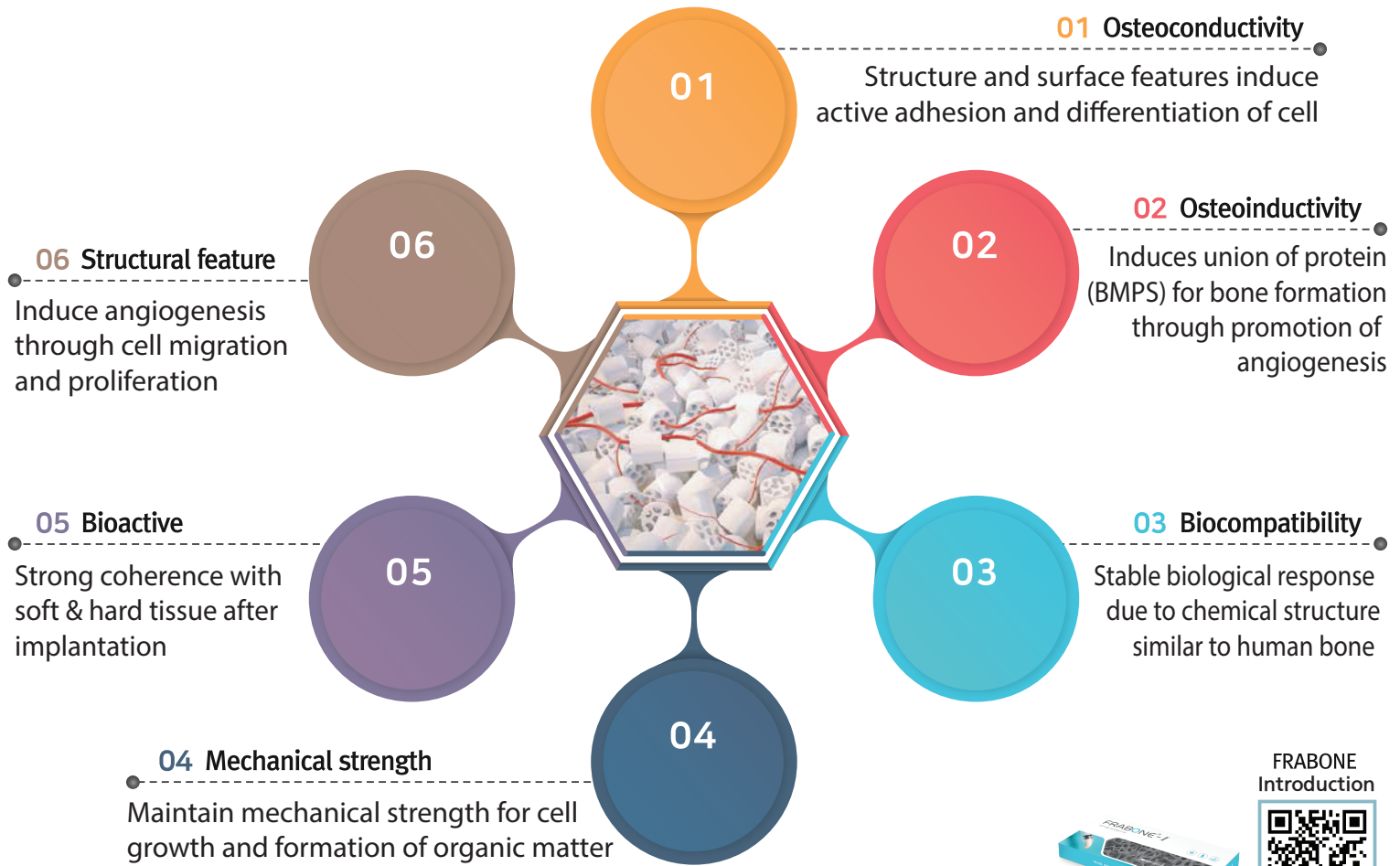


- 
Syringe Type Synthetic Bone Substitutes with Excellent Molding Power
 Easy handling and outstanding injector-ability with excellent molding power
- 
Mimicking of the 100 ~ 300 μ m cortical bone canal
 Optimized pore size for cell proliferation due to good blood flow
- 
Manufactured with an average of 8.1 μ m HAp / β -TCP powder size optimized for the attachment of osteoblasts
 Very effective in bone regeneration with an average of 8.1 μ m powder size
- 
Manufactured at the perfect ratio without volume reduction
 Excellent Osteoconduction and Osteoinduction

 **FRABONE CANAL** (Mimic Harvarsian Canal)

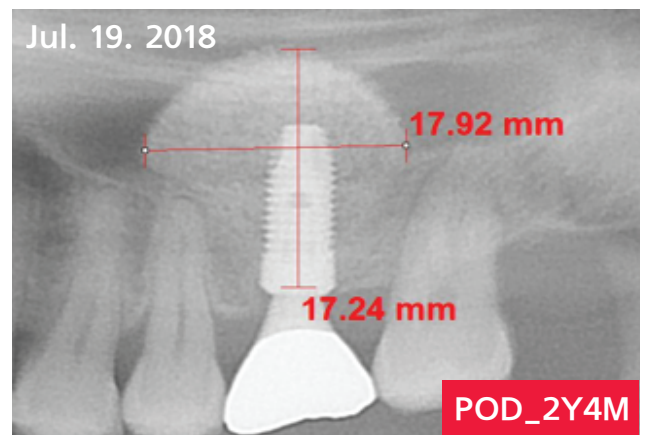
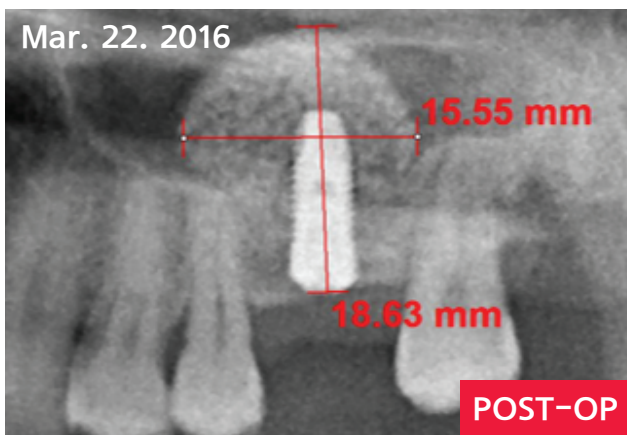
FRABONE-I is manufactured at an optimized ratio of HAp 60% and β -TCP 40%. The mimicked Harversian Canal is an important factor in increasing the mechanical strength of bones. FRABONE is also manufactured at the perfect ratio without volume reduction and has excellent osteoconduction and osteoinduction functions.





Excellent for maintaining volume

With proper biodegradation rate and pore structure, there is no volume reduction of bone graft and new bone is formed inside of implant site



▲ Volume maintained at more than 90% after 28 months of implantation ▲

Manufacturer

B-dong 606, 10, Baekseok Gongdan 1-ro, Seobuk-gu, Cheonan-si, Chungcheongnam-do, Republic of Korea
 TEL. +82-41-906-5666 FAX. +82-41-906-5667 E-mail. inobone@inobone.co.kr www.inobone.com